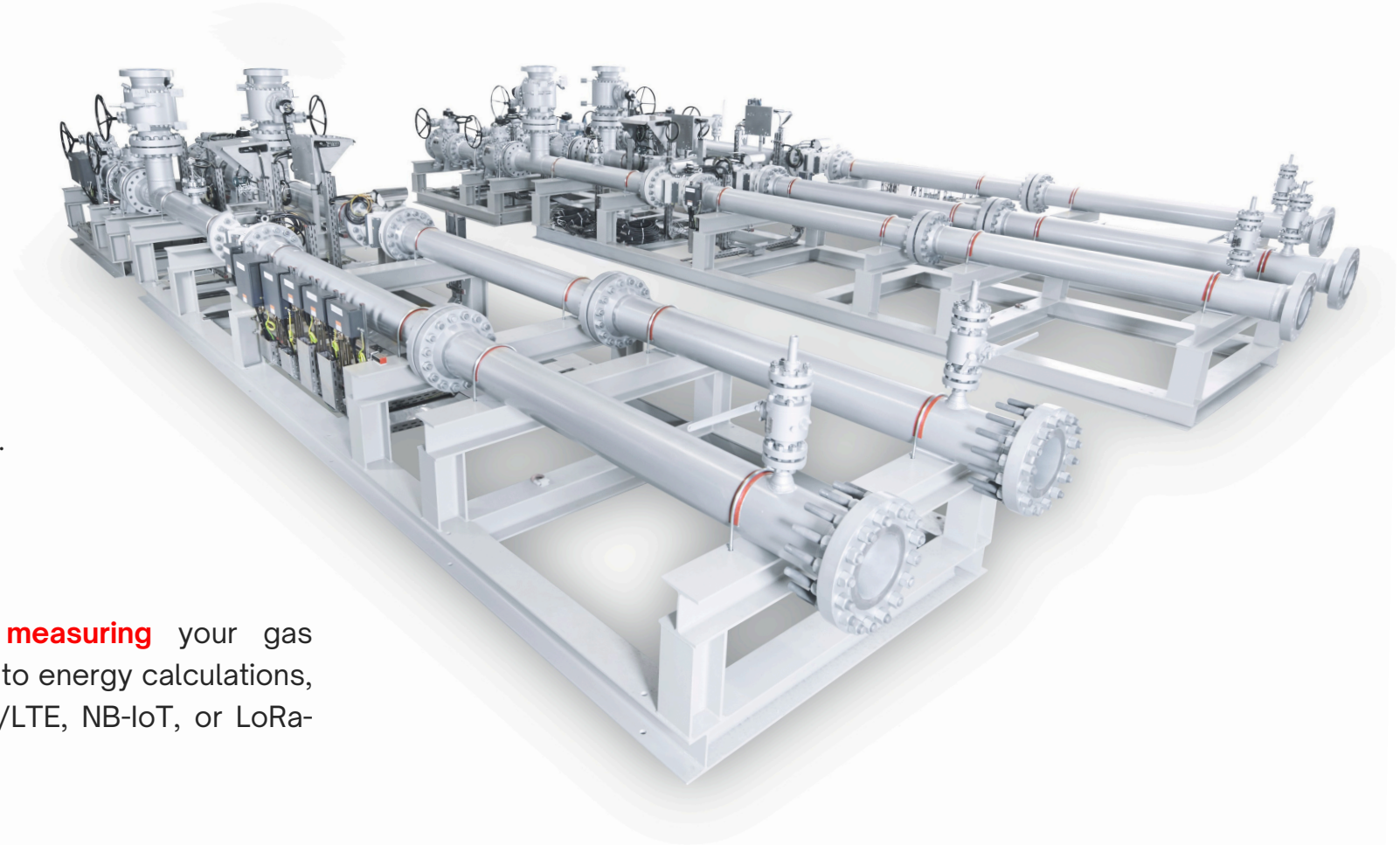


HELLO WORLD

We are OPTIMUM®
Smart Gas Metering and Data Management company.
Also, it is the Turkish subsidiary of
ZENNER® Metering Industry Co.

We have top-notch mastered the business of **measuring** your gas consumption with maximum efficiency, **converting** it into energy calculations, and **transmitting** data with remote access via GPRS/LTE, NB-IoT, or LoRa-WAN.

CUSTODY TRANSFER SKID
RESIDENTIAL
COMMERCIAL
INDUSTRIAL



ANY WHERE TOUCHABLE

- Low price, total-cost ownership (TCO)
- No-moving parts, maintenance, and calibration
- Automatic Zero-SPAN and Zero-DRIFT
- Temperature and Pressure Compensation
- 1:160 high-precision turndown ratio
- Reverse Flow Detection and treat, Accuracy < 0,8%

Certified Approval

Gas USM -Ultrasonic SMART Meter- CE, MID, OIML, ATEX, PED, EMC Approved, Long-Life Battery up to 10 years.

(Hazardous Area) IEC EN 60079.

USM SERIES, G4 .. G40 ULTRASONIC SMART METER



ZENNER USM series is a **MID-approved** Ultrasonic SMART Meter in-built **electronic volume converter** suited to **residential, commercial, and light-industrial** applications. It converts the actual volume measured by the sonic sensor to reference conditions for **energy calculation**.

The **ZENNER USM series** can transfer data and keep archives by connecting to **remote access platforms** such as SCADA or WebBrowser via TCP/IP such as GPRS or NB-IoT.



DISPLACEMENT FLOW

- Low price, total-cost ownership (TCO)
- No-moving parts, maintenance, and calibration
- Automatic Zero-SPAN and Zero-DRIFT
- Temperature and Pressure Compensation
- 1:160 high-precision turndown ratio
- Accuracy < 0,5%

Certified Approval

Gas ZYL -Rotarymeter- CE, MID, OIML, ATEX, PED, EMC Approved.
(Hazardous Area) IEC EN 12480..

ZYL SERIES, G10 .. G1000 ROTARY GAS METER



ZENNER ZYL series is a MID-approved Rotary Gas Flow Meter on-built **electronic volume converter (optional)** suited to volume measured by **displacement** via transmission gear by frequency transmitter (also known as pulse generator) such as Square-Wave signal (LF) imp. or (HF) high-frequency (op.) such as Hz.



TURBINE BLADE FLOW

- Flow Conditioner **AGA 3 / API 14.3** and **ISO 5167-1**
- one-caliber three-cartridge spect (**S, M, L**)
- Temper Detection for magnetic attempt
- Temperature and Pressure transmitter plug and whell.
- 1:20 turndown ratio
- Accuracy < 0,5%

Certified Approval

Gas ZTM -Turbinemeter- **CE, MID, OIML, ATEX, PED, EMC** Approved.
(Hazardous Area) IEC EN 12261.

ZTM SERIES, G40 .. G4000 TURBINE GAS METER



ZENNER ZMT series is a **MID-approved** Turbine Gas Flow Meter on-built **electronic volume converter (optional)** suited to volume measured by **turbine blade** via transmission gear by frequency transmitter (also known as pulse generator) such as Square-Wave signal (**LF**) imp. or (**HF**) high-frequency (op.) such as **Hz**.



ELECTRONIC VOLUME CONVERTOR

- Low-price total-cost ownership (TCO)
- ATEX Approved II 1 G Ex ia IIB T4 Gb
- 5 .. 30 Vdc supply via galvanic isolator for Ex-Zone I - II
- AGA, SGERG norms, ModBus protocol, TCP/IP via GPRS
- Accuracy < 0,1% IEC EN 12405:1A and EN12405:2A

Certified Approval

Gas EVC -Electronic Volume Converter- CE, MID, OIML, ATEX, PED, EMC Approved, Long-Life Battery up to 10 years.

(Hazardous Area) IEC EN 12405.

MACBAT-5 SERIES EVC



EVC and RTU pannel via GPRS

MacBat-5 is a MID approved electronic volume converter suited to commercial and industrial applications. It converts the actual volume measured by the gas meter to reference conditions to **energy calculation**. **MacBat-5** can simultaneously connect with up to two pressure and temperature transducers for dual-stream, a gas chromatograph, an external Cloud-Platform, SCADA or DCS device etc.



MULTI-FUNCTIONAL ENERGY FLOW COMPUTER

- Orifice, Venturi, Vortex, Turbine, Ultrasonic, Coriolis, etc..
- 4..20mA, A/Ix8, D/Ix8. D/Ox4 HART® P2P or Multidrop
- 24 Vdc supply via galvanic isolator for Ex-Zone I - II
- AGA norms, ModBus protocol, TCP, RS485 and Ethernet
- Accuracy < 0,1% **IEC EN 12405:2A** and **EN12405:2B**

Certified Approval

The UNIFLOW-200 MFC has - **CE, MID, OIML, ATEX, ISO, EMC** Approved,
(Hazardous Area and/or Safe Area Only) IEC EN 61079-0-1-11..

UNIFLOW-200 SERIES MFC



Emission
Calculation



The **UNIFLOW-200 MFC** was originally designed for hydrocarbon gas and liquid flow measurement for fiscal measurement and **custody transfer**.

The **Uniflow-200 MFC** is a **MID-approved** Multifunctional Flow Computer suited to commercial and industrial applications. It converts the actual volume measured by the gas meter to reference conditions for **energy calculation**.

The **Uniflow-200 MFC** can simultaneously connect with up to two pressure and temperature transmitters for dual-stream, a **gas chromatograph**, an external **Cloud-Platform, SCADA** or **DCS** device etc.



ULTRASONIC GAS FLOW METER

Features & Benefits:

Energoflow® GFE-404-C can be **accessed remotely via PC** using special software, it is possible to display the following data as per the customer's choice:

- Measurement results of direction and speed of gas flow
- Current flow, and accumulated total volume
- The acoustic (**4 path**) channel **low-noise harmonics**
- Configuration settings **on** the flow meter or via **HART®**
- **Reverse flow detection** and addition to the total volume
- High-precision turndown **accuracy up to 1:250**

GFE-404 SERIES
USM



Four-channel Ultrasonic Gas Flow Meter **Energoflow®**

GFE-404 series is **MID** certified, **ATEX** specially designed for applications where very high accuracy is required, e.g. for **custody transfer** measurement of natural gas. The standard version provides an **accuracy of <0.5%**, and flow meters with an **accuracy of <0.2%**. **GFE-404** certified to **OIML R137 class 0.5** by **PTB**.

The **HART®** protocol via RS485 and **SMART** family ultrasonic flow meters provide accurate and reliable measurements of the gas flow rate from **0.15 to 40 m/s** in a wide range of sizes up to 24".





Proses Ölçü Kontrol

DUAL CHAMBER OR ORIFICE METER RUN

- Low-price total-cost ownership (TCO)
- no moving part
- no maintenance
- no calibration
- 1:50 high-precision turndown ratio (1 : 100 requirement)
- Accuracy < 0,3%
- General principles and requirements ISO 5167-1
- Orifice Plate ISO 5167-2
- Flow Conditioner AGA 3 / API 14.3 and ISO standard.

DCO SERIES
DUAL CHAMBER ORIFICE



All fittings come trough

Standard with documentation including hydro-test, function test, inner valve seal test, quality control inspection, and material test reports acc.to **EN 10204-3.1B** and **EN 10204-3.2**

Dual Chamber Orifice Fitting

The **INFLO®** brand **Dual Chamber Orifice Fitting** allows for accurate flow measurements, orifice plate inspection and changing without breaking apart or depressurizing the flow **on-line**.



HAPPY CLIENT

**Jorgen Strom,
BEMA A/S**

" I had worked with Altan from 2004 to 2010 where he was the senior engineer and representative of FLONIDAN. Altan is a very dedicated and active person. "

**Rene Gardsvig,
FLONIDAN**

" Altan has strong skills to create innovative solutions to overcome issues that serves all parties interests. He is very friendly and reliable team member who is able to create long term business relationships at ease."

**Tom Gyllenhaal,
TOYOTA**

" INFLO® has assisted me my investment from start to finish. They listened to what I needed and suggested variations based on my budget. "

**Ayhan Kılıç
Makine İhtisas OSB**

" INFLO® has completed the SCADA project within the scope of the EVC rehabilitation of WebPortal via GPRS gateway and electrical protection modules and BOTAŞ integration at 60 points in our gas distribution region."

GET IN TOUCH

OPTIMUM® Isıtma Çözümleri A.Ş

Bağdat Cd. Yavuz Sk. No.2/4
Cevizli, 34870 Maltepe,
İstanbul - TR

+90 216 370 15 58



© 2024 with OPTIMUM® Group Assurance.

E-MAIL

info@optimumisitma.com

MEN AT WORK

09:00 - 17:00 Monday to Friday GMT+3

NAVIGATE ME

[40.918195, 29.142875](#)